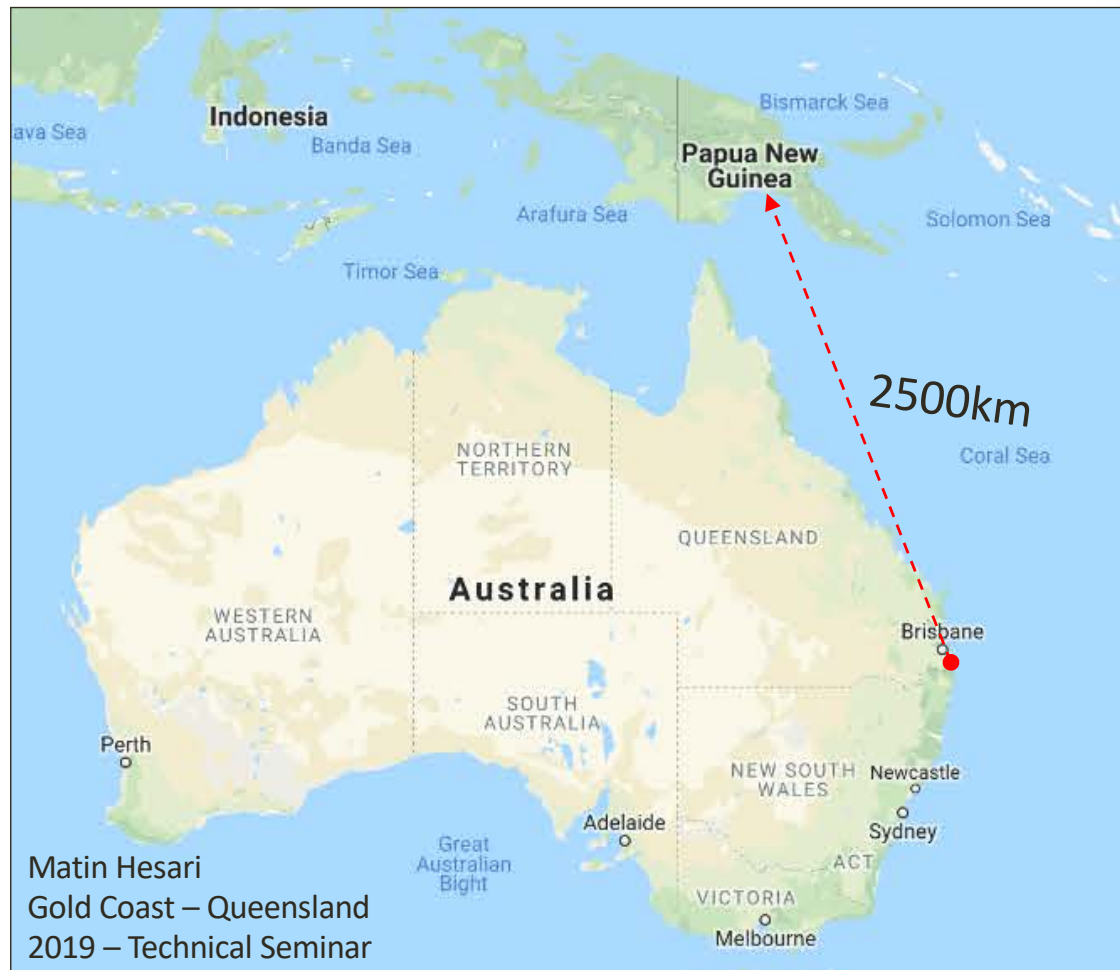




# My PNG Adventure



Papua New Guinea



# Getting Started

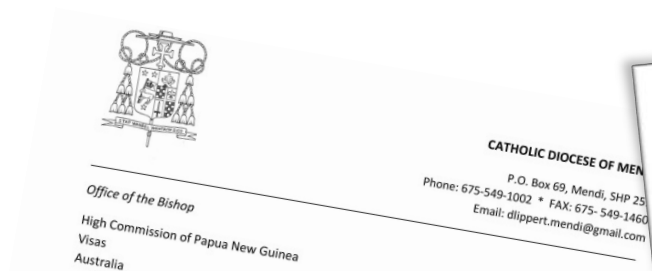
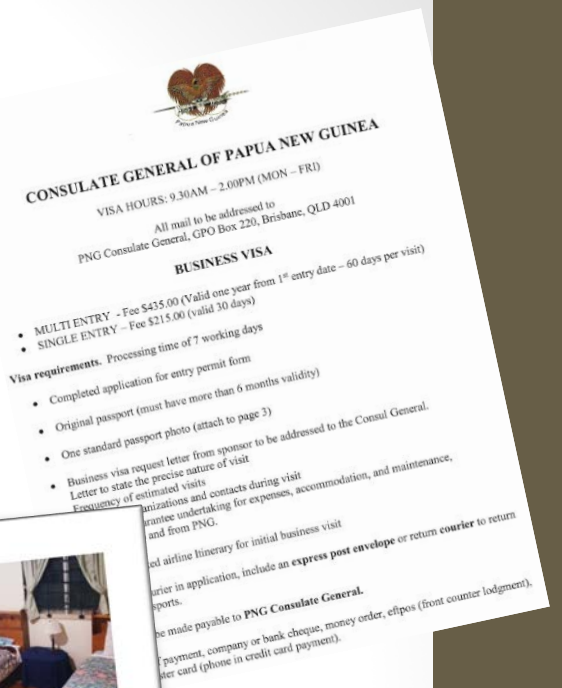
## Process:

Letter of Invitation;

Organising VISA requirements with PNG Consulate;

Travel and accommodation arrangements;

Medical Checks;



21 July 2018  
Dear Friends,  
Peace and goodness!  
Prot. 175/2018

I have invited Mr Matin Hesari, who is with Douglas Partners, Pty Ltd. (Varsity Lakes, Queensland, Australia) to come to Mendi, Southern Highlands Province of PNG, to provide urgent and crucial geotechnical services that are not available in PNG.

Professional geotechnical services are required to assist us in assessing remedial work that will need to be carried out at several mission properties in Mendi that were damaged by the earthquake disaster of February 2018.

The properties range from double classrooms to accommodation for mission personnel to a mission school. We are unable to proceed with repairs until we are certain that the land on which the buildings were erected is safe and stable.

While in Mendi, the Catholic Mission will provide for transportation and accommodation of Mr Hesari as well as any other incidental needs.

I humbly request that you grant the multiple-entry visa that will allow Mr Hesari to come to Mendi in order to assist us with this urgent need. He will likely be required to return to Mendi over the course of the next 6 months to a year, to inspect the progress of work to be done.

I am grateful for your consideration.

Respectfully,  
*Francis Lippert, OFM Cap.*  
Francis Lippert, OFM Cap.  
Mendi



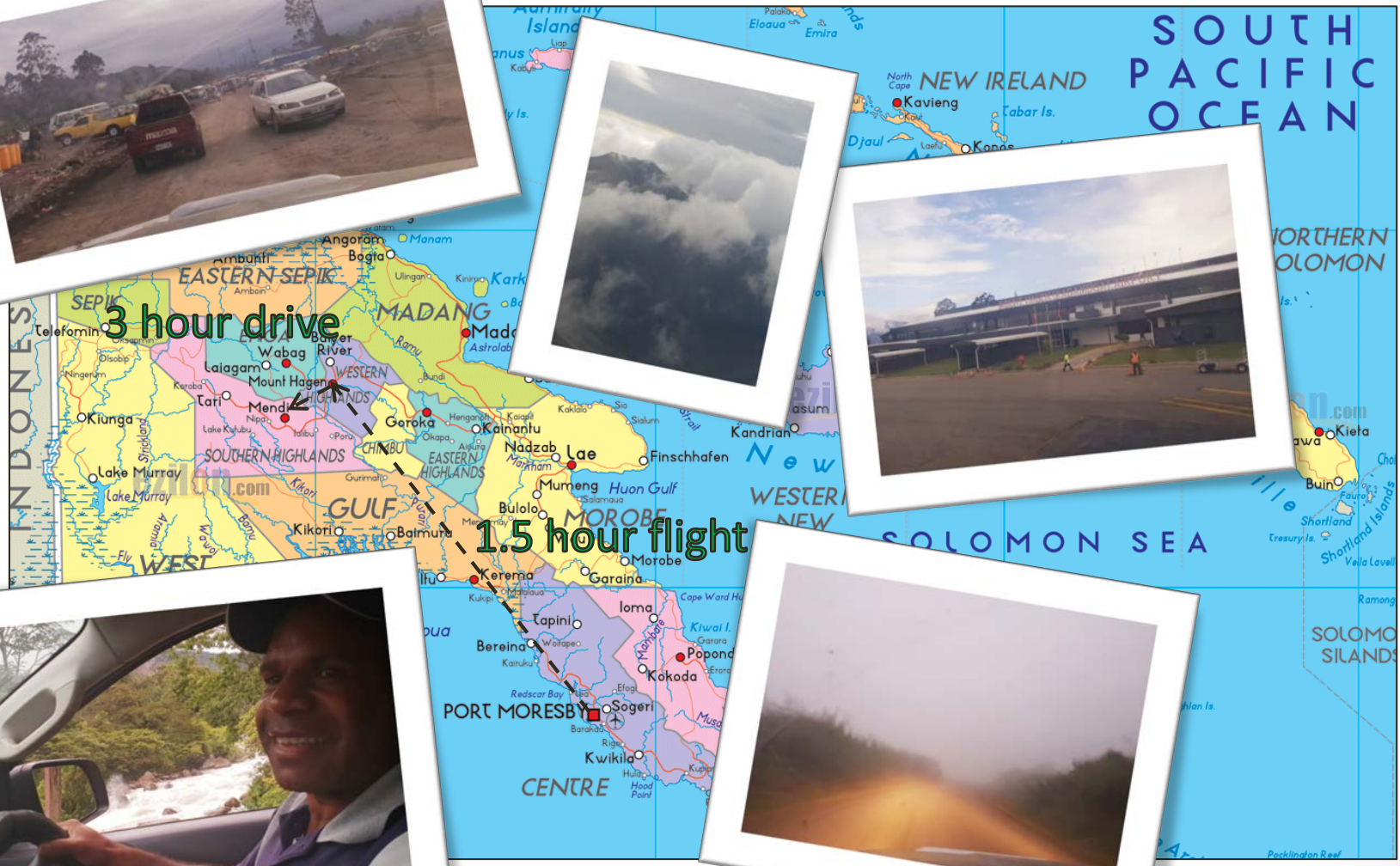


# Travelling



3 hour drive

1.5 hour flight



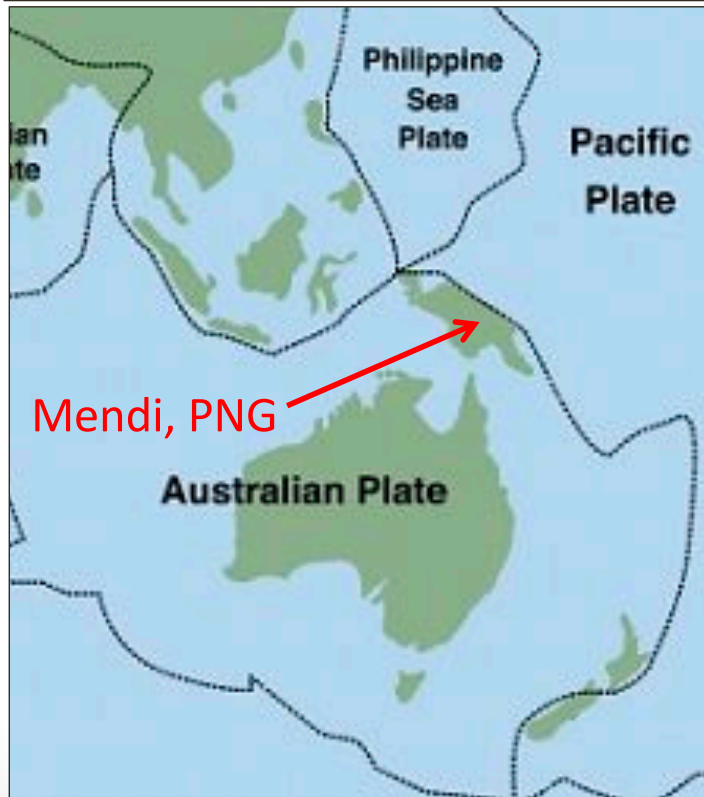


# First impressions of PNG

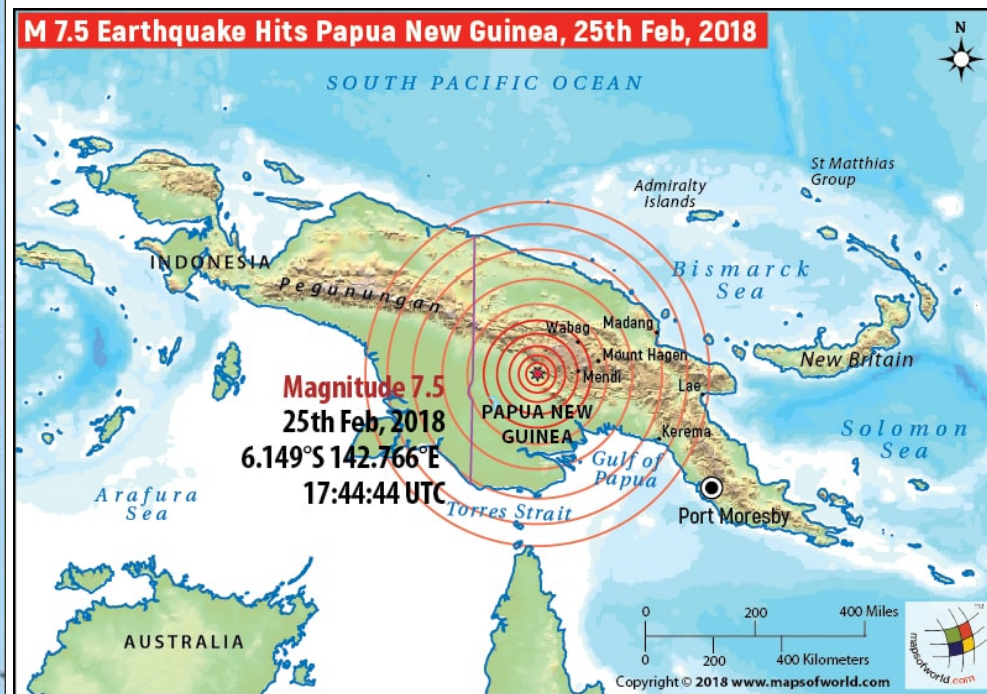




# Background



Approximate Location of Tectonic Plates

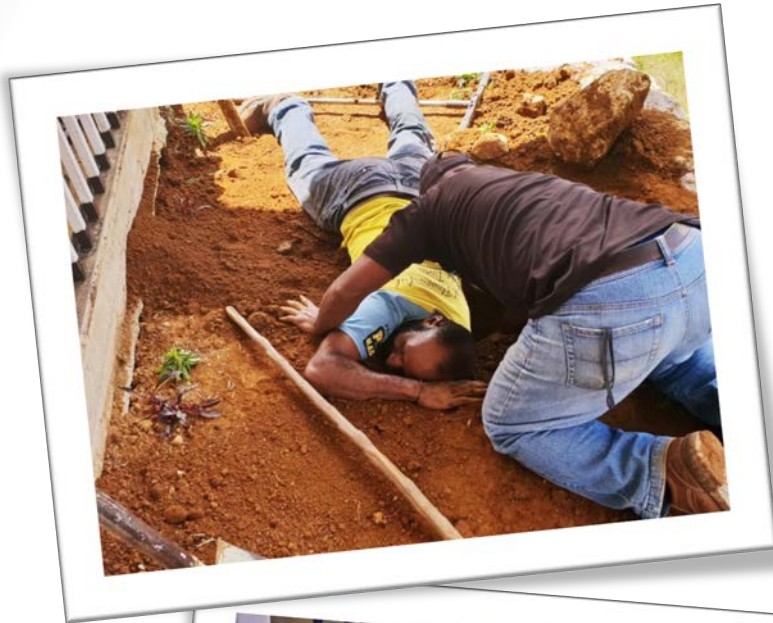


# Assessment Locations in Mendi





# Testing at Mendi Sister House





# Testing at Catechist training School

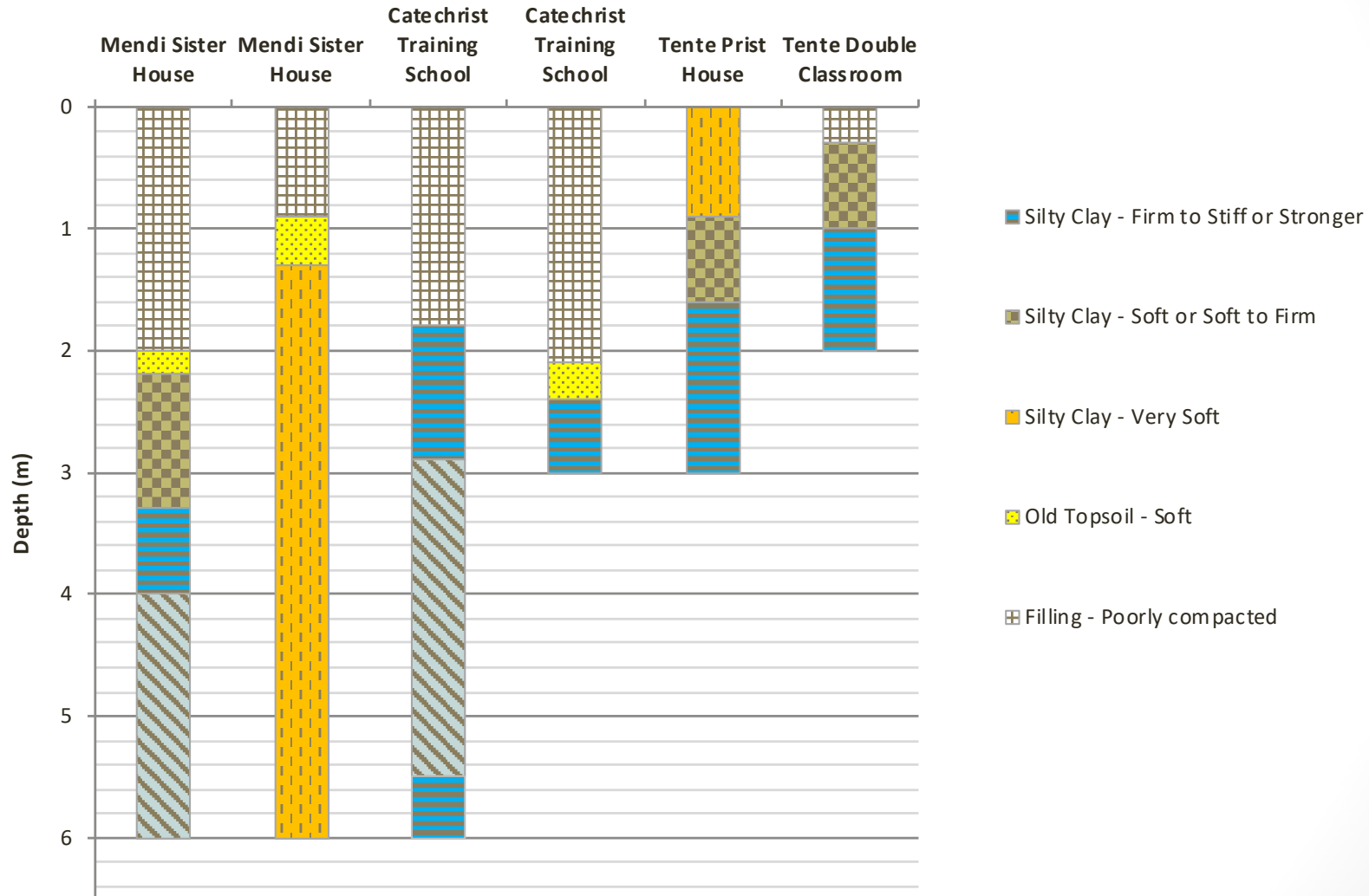




# Testing at Tente Double Classroom and Priest House

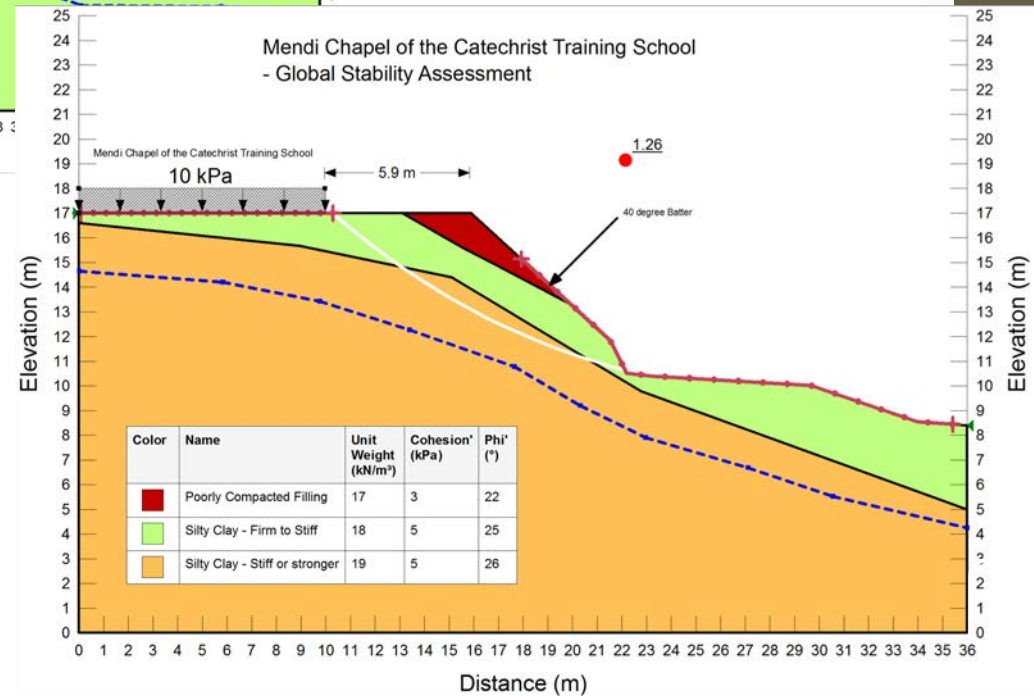
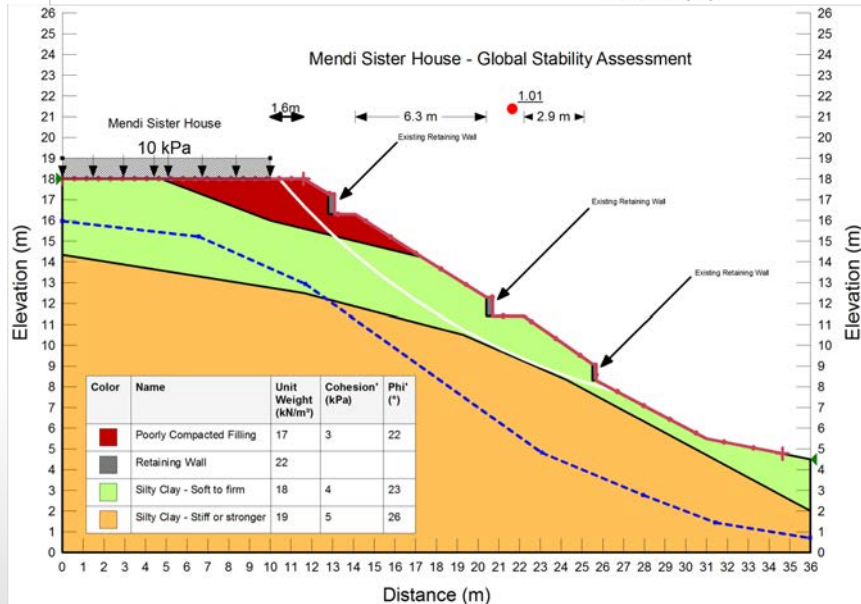
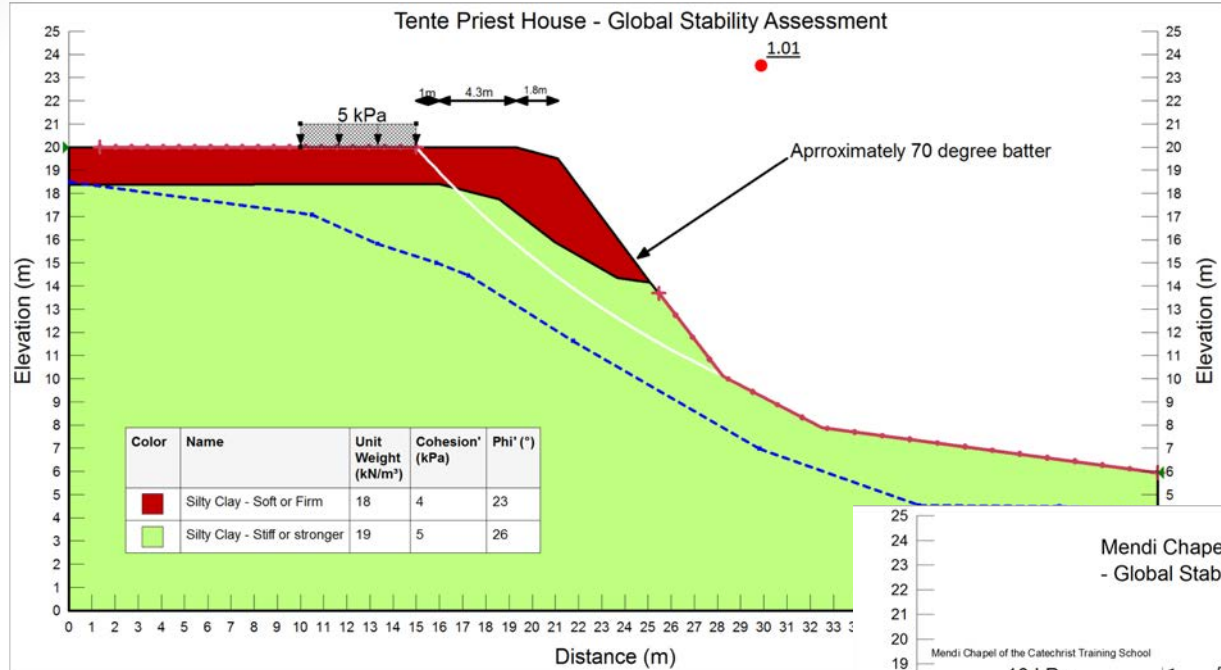


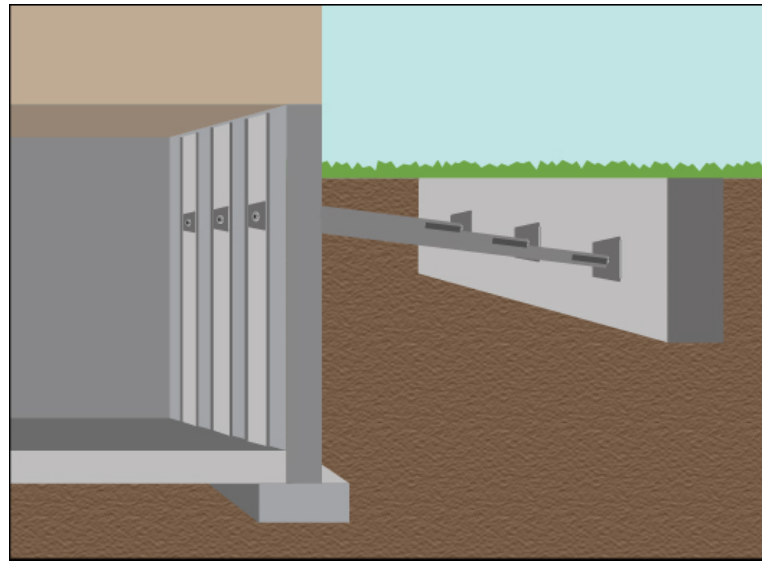
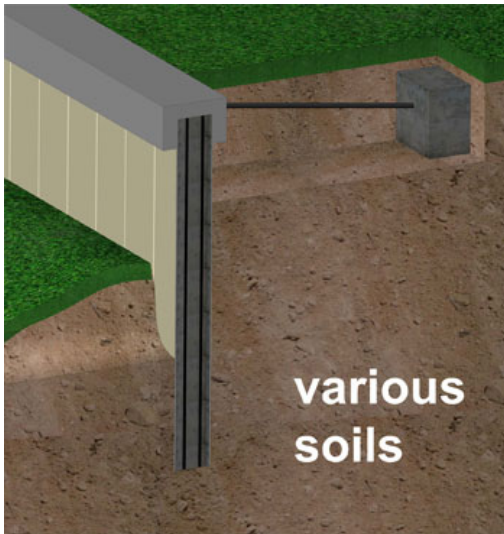
# Subsurface Conditions





# Analysis Output







# Collaboration





# Questions

